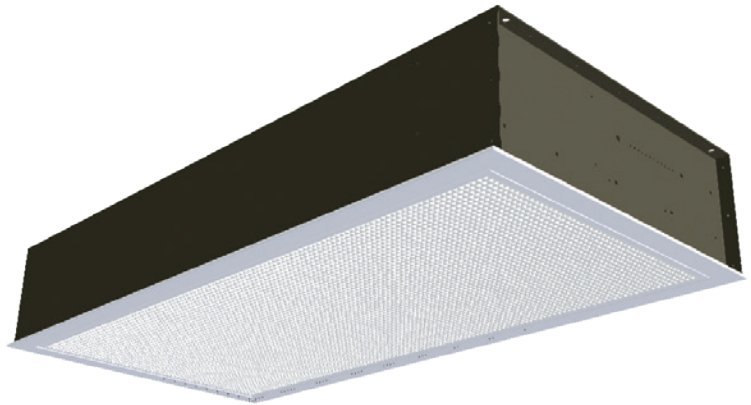




Tilevector Solo Plus



Tilevector Duo Plus

# Belgravia Tilevector Plus

## Fan Convector units for low water temperature applications

The conventional Tilevectors are intended to fit within a suspended T bar ceiling grid. They are designed for optimum operation against traditional hot water temperatures generated by conventional boilers.

The Tilevector Plus unit has been developed as an alternative unit with enhanced airflow and heat exchanger to optimise operation against the increasingly lower temperature hot water available from heat pumps and condensing boilers.

The tables below give details of the outputs obtainable from the Tilevector Plus unit supplied with various low grade hot water temperatures.

The Tilevector Plus is available as both a Solo and Duo unit. Overall dimensions of the Solo unit are 595mmx595mmx260mm and for the Duo unit 1195mmx595mmx260mm. Weight of the Solo is 20kg and the Duo 35kg. Connections are 15mm copper on flow and return.

Unit size	Solo Plus			Duo Plus		
	Speed	Low	Medium	High	Low	Medium
Output (kW)	2.7	3.2	3.5	5.8	7.1	7.8
Water flow (l/s)	0.06	0.08	0.08	0.14	0.17	0.19
Water PD (kPa)	9.4	13.1	15.4	9.4	13.7	15.8

Table 1. Performance at 50/40°C water, 18°C entering air

Unit size	Solo Plus			Duo Plus		
	Speed	Low	Medium	High	Low	Medium
Output (kW)	2.1	2.6	2.8	4.7	5.7	6.3
Water flow (l/s)	0.05	0.06	0.07	0.11	0.14	0.15
Water PD (kPa)	6.5	8.9	10.6	6.6	9.2	11.0

Table 2. Performance at 45/35°C water, 18°C entering air

Unit size	Solo Plus			Duo Plus		
	Speed	Low	Medium	High	Low	Medium
Output (kW)	2.3	2.8	3.0	5.2	6.2	6.8
Water flow (l/s)	0.04	0.05	0.05	0.08	0.10	0.11
Water PD (kPa)	3.5	4.9	5.8	3.7	5.2	6.1

Table 3. Performance at 50/35°C water, 18°C entering air