

1¼" SPC Zone Control Kit

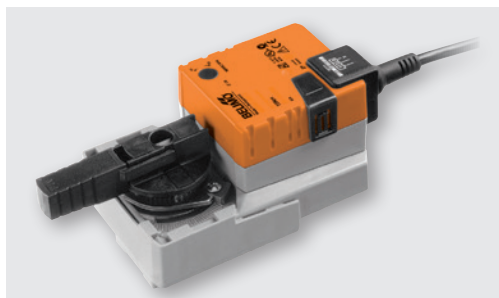
for radiant panels - Order reference 70-0017

The SPC control kit allows for accurate control of radiant panels within a specified zone or area.

Each kit comprises 1 off of each of the following items and includes a 5 year warranty as standard.

Belimo Rotary Actuator

- Nominal torque min 10 Nm
- Nominal voltage AC 230 V
- Control Open-Close
- Maintenance free
- Manual Override
- Position indication
- Order code: 40-0004



Belimo Zone valve

- For closed cold and warm water systems
- Complete shut off function
- 1¼" nominal bore
- Brass body, nickel plated
- Stainless steel closing element
- Maintenance free
- Vertical or horizontal installation (not downward pointing)
- Order code: 30-0013



Digital thermostat

- Power supply AC 230 V
- LCD mode
- Operating temperature range 0°C - 50°C
- Setting temperature range 5°C - 37°C
- (Standard) WT-D Digital Thermostat - Order code: 40-0013
- (Optional) WT-P Programmable Thermostat - Order code: 40-0016



SPC black bulb temperature sensor

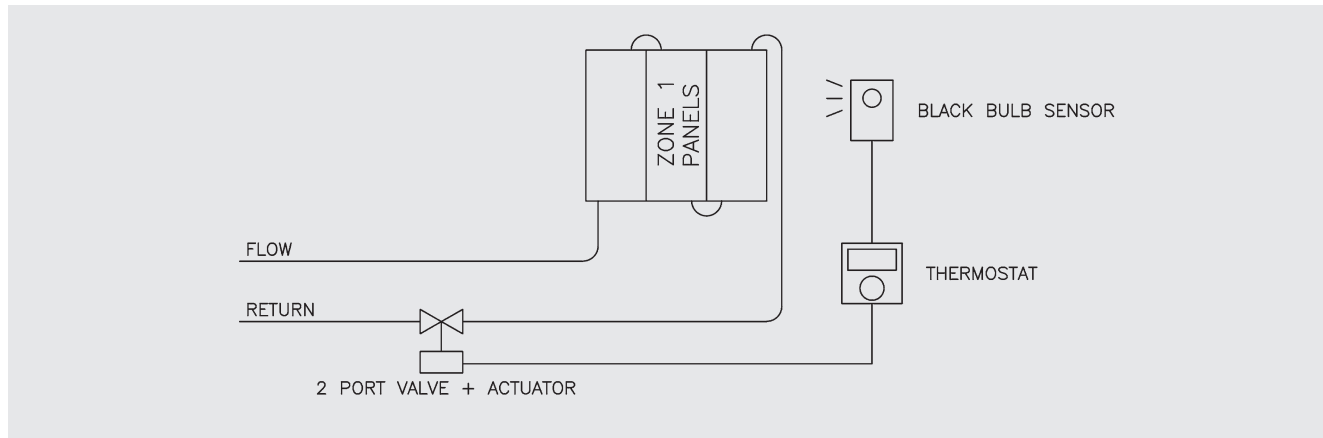
- Measures effective temperature
- Flame retardant ABS housing
- Compact casing
- IP30 Rated
- Ambient range -10°C – 60°C
- Order code: 40-0002



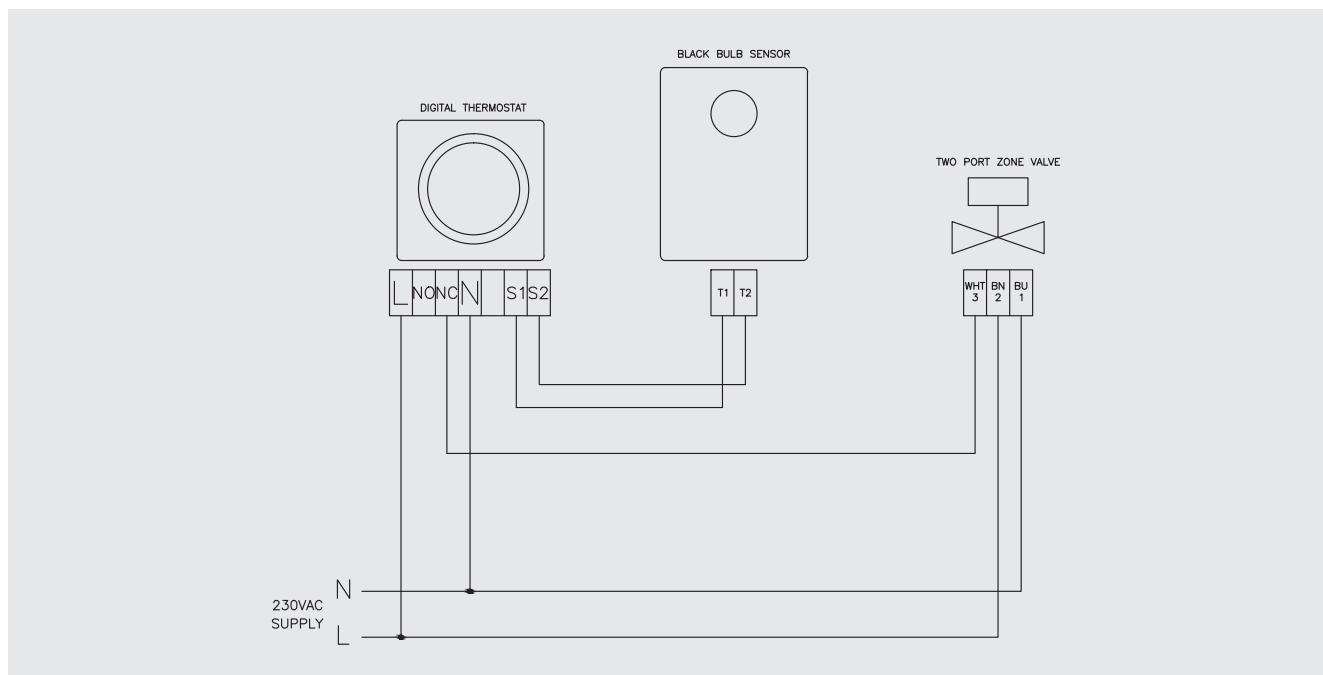
Black Bulb Sensor Installation

- Select a location on the wall of the controlled space which will give a representative sample of prevailing room conditions
- Avoid installing the sensor in direct sunlight, on an outside wall or near heat sources
- An ideal mounting height is 1.5m from the floor
- In a sports hall, the black bulb sensor needs protection from potential ball damage

Schematic



Wiring Diagram



SPC House, Evington Valley Road, Leicester LE5 5LU
T: 0116 249 0044 E: spc@spc-hvac.co.uk
spc-hvac.co.uk

Ref: 1¼" SPC zone ctrl, issue 6

