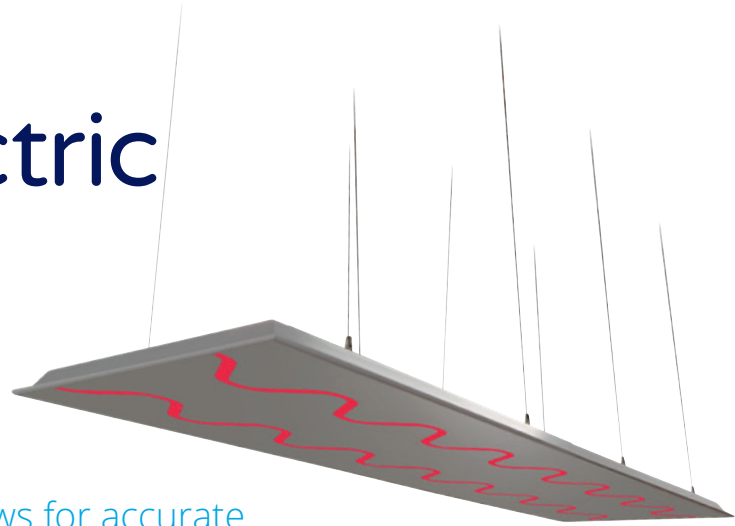


Thermatile Electric Radiant Panels Controls Kit



The electric radiant panels control kit allows for accurate controls of radiant panels within a specified zone or area.

Control kits are available to control up to 12-off parallel panels within a zone.

Master Control Kit

Includes the below Items:

- Black IP Box (wired as per wiring W5038)
- Digital Thermostat
- Black bulb Sensor



Slave Control Kit

Includes the below Items:

- Black IP Box (wired as per wiring W5039)



Digital thermostat

- Power supply AC 230 V
- LCD display mode
- Operating temperature range 0°C - 50°C
- Setting temperature range 5°C - 37°C
- Order code: 40-0013



SPC black bulb temperature sensor

- Measures effective temperature
- Flame retardant ABS housing
- Compact casing
- IP30 Rated
- Ambient range -10°C – 60°C
- Order code: 40-0002



Black Bulb Sensor Installation

- Select a location on the walk of the controlled space which will give a representative sample of prevailing room conditions
- Avoid installing the sensor in direct sunlight, on an outside wall or near heat sources
- An ideal mounting height is 1.5m from the floor
- In a sports hall, the black bulb sensor needs protection from potential ball damage

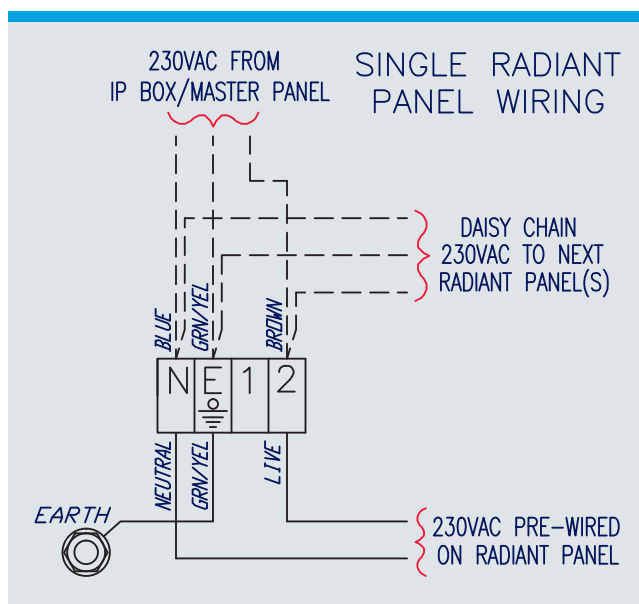
Thermostat Installation

- The thermostat itself can be mounted remotely or inaccessibly
- Only the black bulb sensor, which is wired to the thermostat, needs to be mounted in the space

Electrical Connections

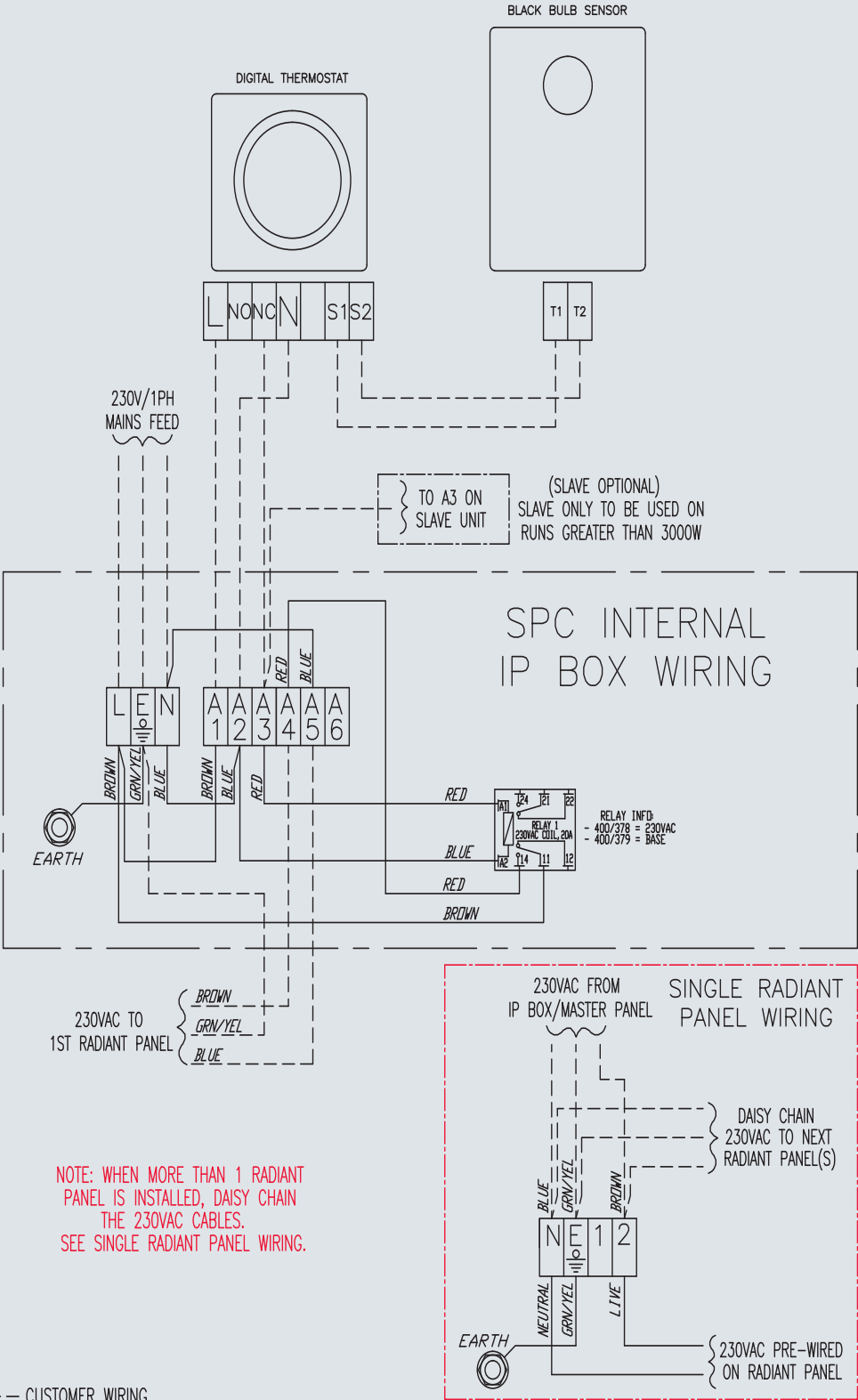
All wiring must be undertaken in line with current local regulations (latest IET edition) by a competent and qualified installer.

Each panel incorporates an electrical bracket with sealed terminal box. A 230V single phase supply is required for each panel and an earth connection must be included.

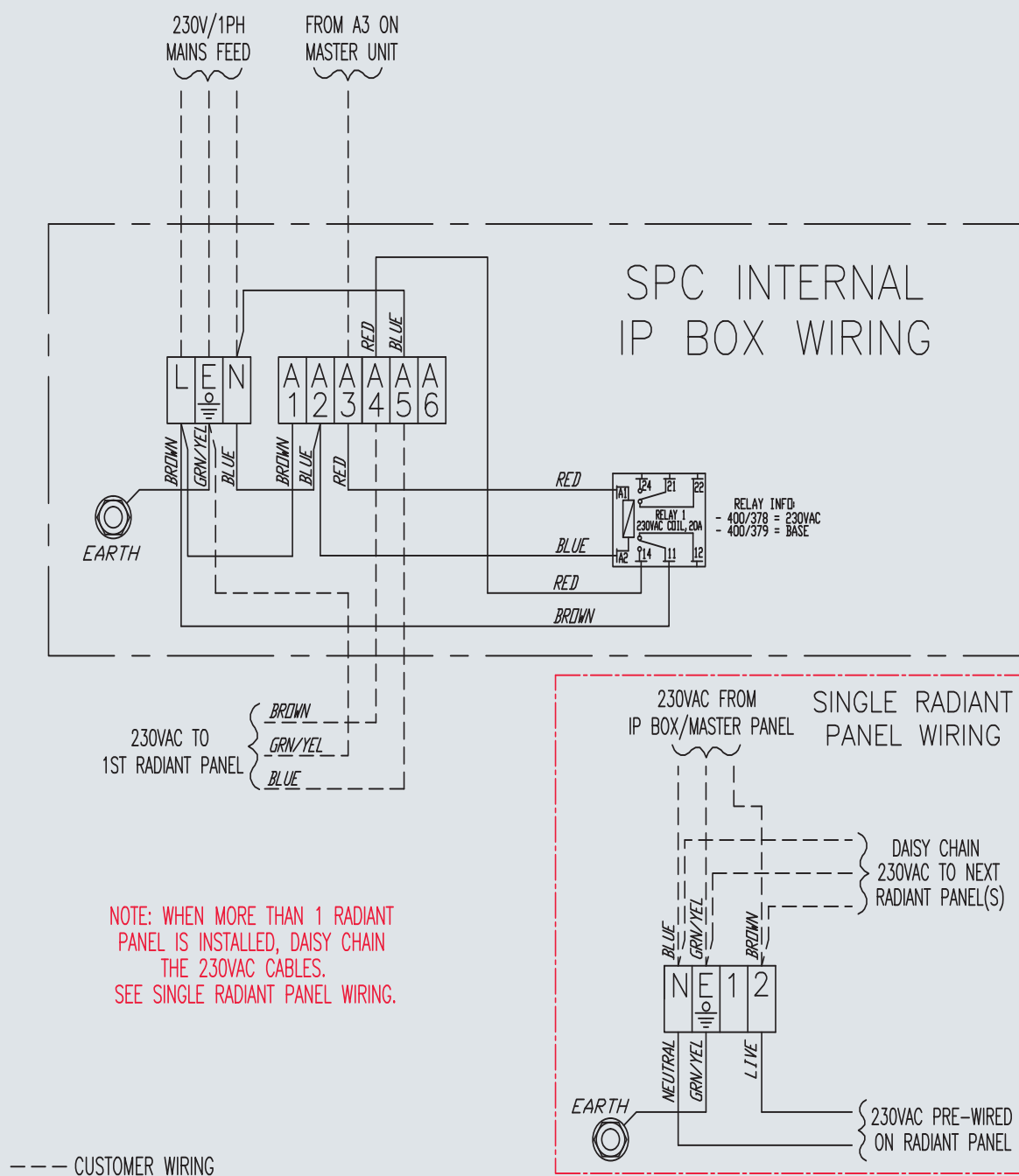


Wiring Diagram

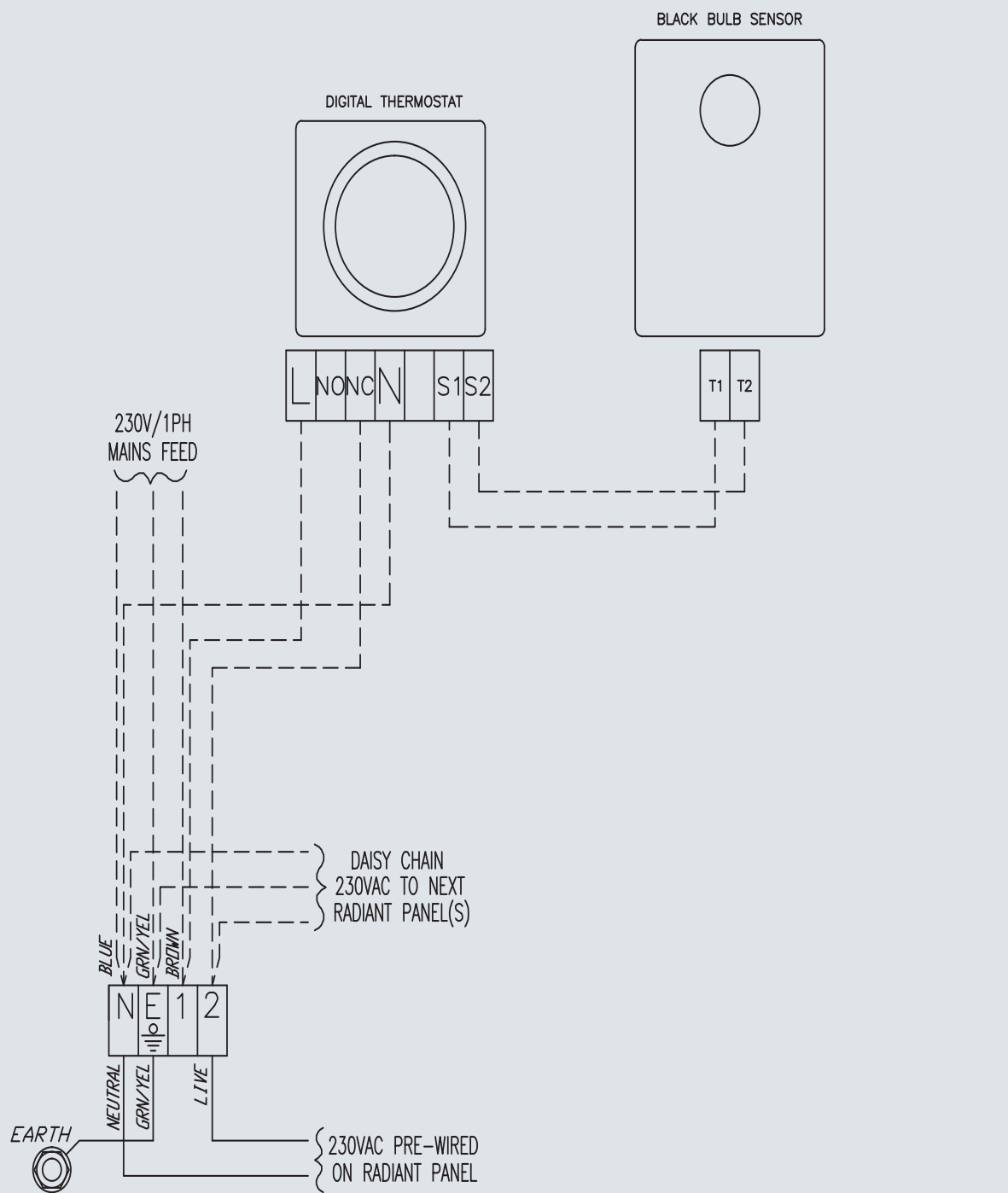
W5038 = Master Control Kit



W5039 = Slave Control Kit



W5040 = Standalone Panel Control Kit



NOTE: WIRING FOR MAXIMUM OF 2-OFF 600 x 600
PANELS & 1-OFF 600 x 1200 PANEL ONLY.
FOR MORE PANELS IN RUNS, SEE WIRING W5038.

--- CUSTOMER WIRING



SPC House, Evington Valley Road, Leicester LE5 5LU

T: 0116 249 0044 E: spc@spc-hvac.co.uk

spc-hvac.co.uk

Ref: SPC Thermatile Electric Radiant Panels Control Kit