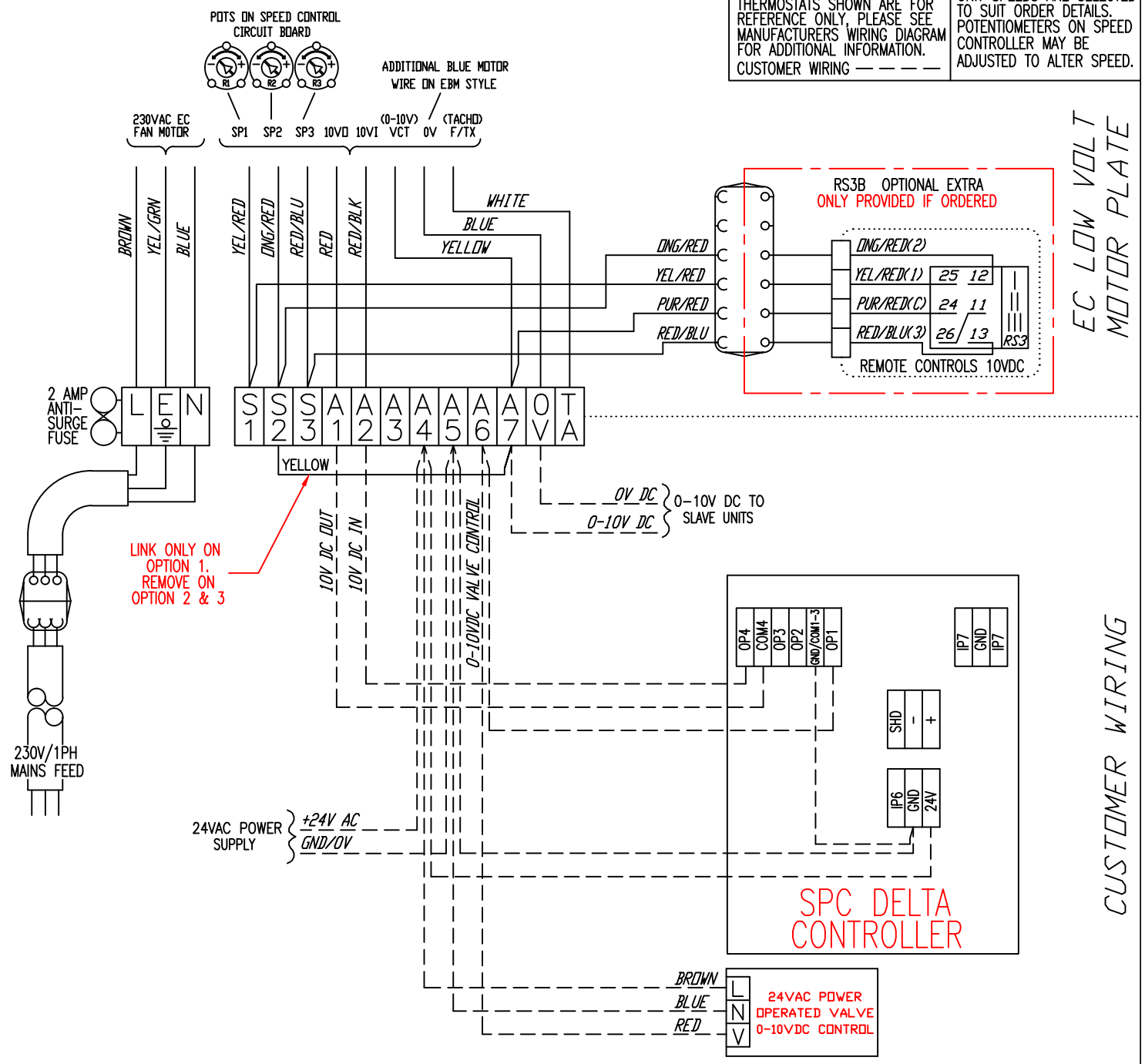


NOTE:- THERMOSTATS SHOWN ARE FOR REFERENCE ONLY, PLEASE SEE MANUFACTURERS WIRING DIAGRAM FOR ADDITIONAL INFORMATION.  
CUSTOMER WIRING — — — —

UNIT SPEEDS ARE SELECTED TO SUIT ORDER DETAILS. POTENTIOMETERS ON SPEED CONTROLLER MAY BE ADJUSTED TO ALTER SPEED.



**IMPORTANT:**

WHEN REMOVING BACKPLATE, UNSCREW THE BOTTOM AND REMOVE FROM BOTTOM AS THE CONTROLLER HOOKS TO THE TOP. THIS IS TO AVOID DAMAGE TO THE CONTROLLER.

NOTE:  
PLEASE SELECT OPTION BELOW FOR WIRING BASED ON CONTROLS ORDERED

OPTION 1 = DELTA + VALVE  
DELTA + VALVE WIRING

OPTION 2 = DELTA + VALVE + RS3B  
DELTA + VALVE + RS3B WIRING  
REMOVE LINK ABOVE

OPTION 3 = SLAVE  
SLAVE = 0-10V SIGNAL  
REMOVE LINK ABOVE



0VDC } 0-10V DC FROM MASTER UNIT  
0-10V DC

**IMPORTANT:**  
ALL INSTALLATION WIRING TO COMPLY WITH CURRENT EDITION OF IEE REGULATIONS. CONNECT MAINS FEED TO UNIT VIA FUSED SPUR BOX OR SIMILAR (3A RATED). OTHER CONNECTION WIRING TO UNIT MUST BE VIA SUPPLIED CUSTOMER CONNECTION BOX (WHERE SHOWN). NON COMPLIANCE WITH ABOVE MAY RESULT IN VOIDING OF WARRANTY.



SPC HOUSE, Evington Valley Rd,  
Leicester. LE5 5LU  
TEL:-0116-2490044.FAX-2490033  
E-MAIL :- SPC@SPC-HVAC.CO.UK

					TITLE CIRRUS UNIT HEATER EC DELTA CONTROLLER OPTIONS	
1		28/07/23	SB	RM	DRG No.	ISSUE
ISS	ECN	DATE	DRN	CHKD	WUH05	1