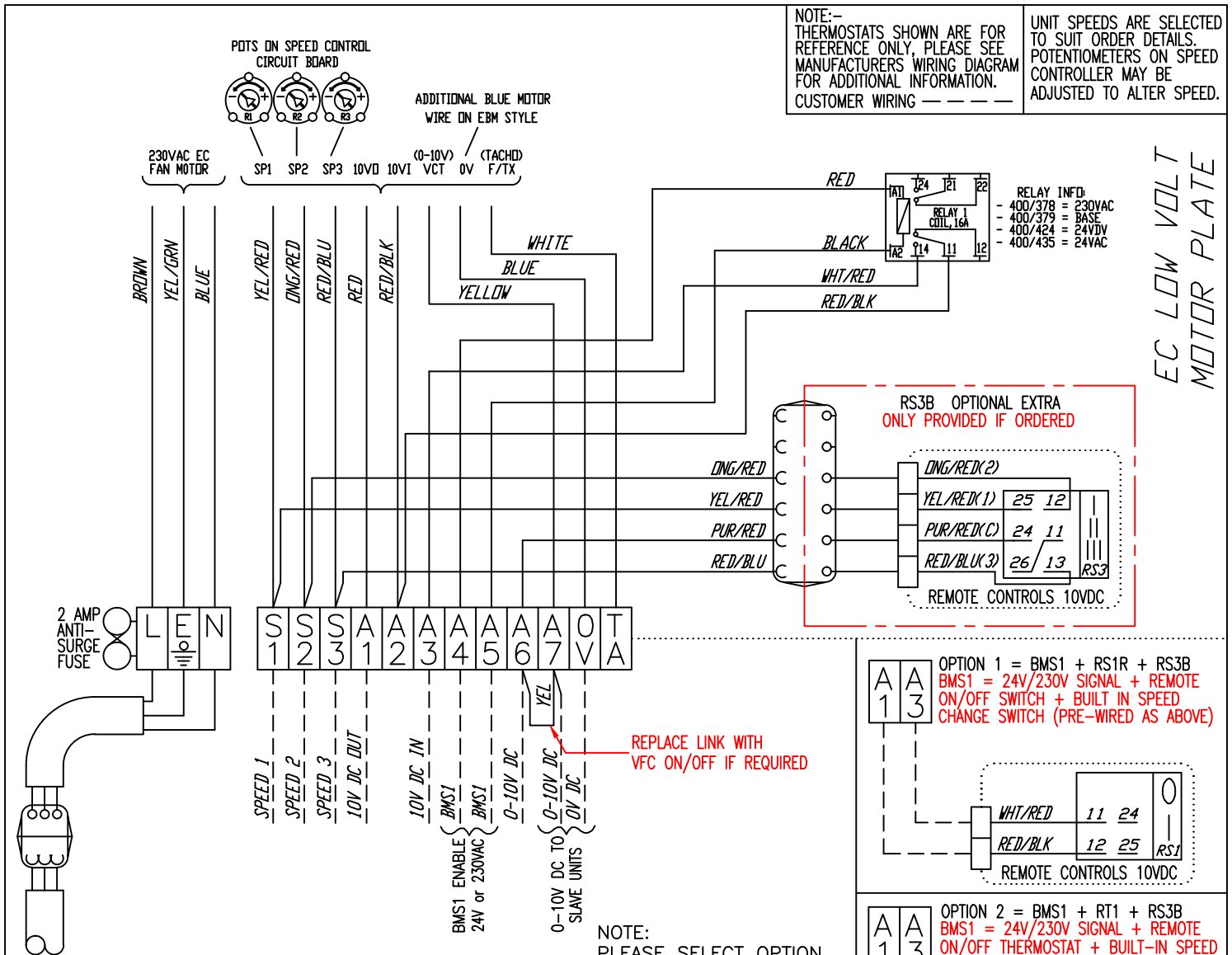


NOTE:- THERMOSTATS SHOWN ARE FOR REFERENCE ONLY. PLEASE SEE MANUFACTURERS WIRING DIAGRAM FOR ADDITIONAL INFORMATION. CUSTOMER WIRING — — — —

UNIT SPEEDS ARE SELECTED TO SUIT ORDER DETAILS. POTENTIOMETERS ON SPEED CONTROLLER MAY BE ADJUSTED TO ALTER SPEED.

EC LOW VOLT MOTOR PLATE



CUSTOMER WIRING

NOTE: PLEASE SELECT OPTION BELOW FOR WIRING BASED ON CONTROLS ORDERED

OPTION 1 = BMS1 + RS1R + RS3B
 BMS1 = 24V/230V SIGNAL + REMOTE ON/OFF SWITCH + BUILT IN SPEED CHANGE SWITCH (PRE-WIRED AS ABOVE)

OPTION 2 = BMS1 + RT1 + RS3B
 BMS1 = 24V/230V SIGNAL + REMOTE ON/OFF THERMOSTAT + BUILT-IN SPEED CHANGE SWITCH (PRE-WIRED AS ABOVE)

OPTION 3 = BMS1 + BMS2
 BMS1 = 24V/230V SIGNAL + BMS2 = 0-10V SIGNAL

OPTION 4 = SLAVE
 SLAVE = 0-10V SIGNAL

OPTION 5 = BMS1 + BMS2 + RS1R
 BMS1 = 24V/230V SIGNAL + BMS2 = 0-10V SIGNAL + REMOTE ON/OFF SWITCH

OPTION 6 = BMS1 + RS13R
 BMS1 = 24V/230V SIGNAL + REMOTE ON/OFF + SPEED CHANGE SWITCH

OPTION 7 = BMS1 + BMS2 + RT1
 BMS1 = 24V/230V SIGNAL + BMS2 = 0-10V SIGNAL + REMOTE ON/OFF THERMOSTAT

OPTION 8 = BMS1 + RT1 + RS3R
 BMS1 = 24V/230V SIGNAL + REMOTE ON/OFF THERMOSTAT + REMOTE SPEED CHANGE SWITCH

IMPORTANT: ALL INSTALLATION WIRING TO COMPLY WITH CURRENT EDITION OF IEE REGULATIONS. CONNECT MAINS FEED TO UNIT VIA FUSED SPUR BOX OR SIMILAR (3A RATED). OTHER CONNECTION WIRING TO UNIT MUST BE VIA SUPPLIED CUSTOMER CONNECTION BOX (WHERE SHOWN). NON COMPLIANCE WITH ABOVE MAY RESULT IN VOIDING OF WARRANTY.



SPC HOUSE, Evington Valley Rd,
 Leicester. LE5 5LU
 TEL:-0116-2490044.FAX-2490033
 E-MAIL :- SPC@SPC-HVAC.CO.UK

3	MORE OPTIONS ADDED	31/08/23	SB	-	
2	MASTER/SLAVE ADDED	28/07/23	SB	RM	
1		11/05/23	SB	-	
ISS	ECN	DATE	DRN	CHKD	

TITLE		CIRRUS UNIT HEATER	
		EC BMS1 OPTIONS GUIDE	
DRG No.	WUHO2	ISSUE	3